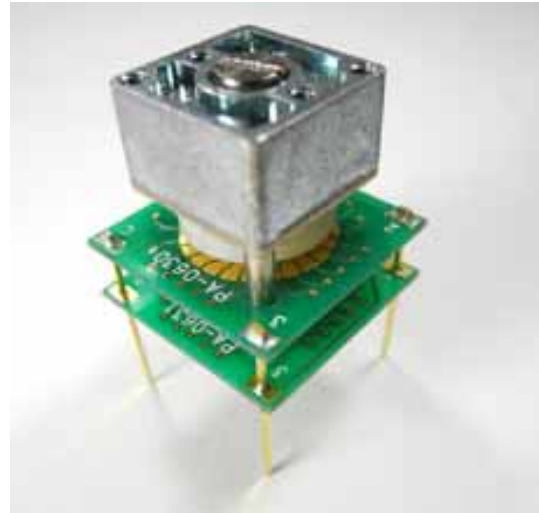




Attenuator

S23 Series

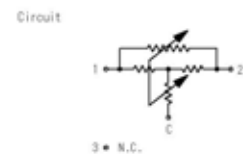
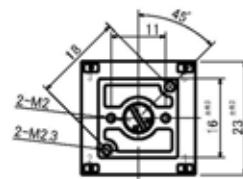


Features

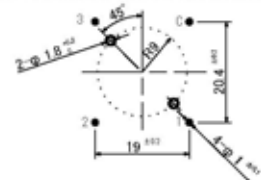
- Fine control steps
- Gold plated rotary switch
- PCB leads

Application

- Measuring equipment
- Audio equipment
- Medical appliances



P.C.Board mounting hole detail (Viewed from mounting side)



Specifications

Circuit	T-type Unbalanced
Attenuation step	4dB max. (0.2dB step x 20 steps)
Attenuation tolerance	+/-0.05dB
Impedance	600Ω
Input Power	0.1W max.
Frequency range	DC ~ 100KHz
Life	10,000 cycles min.
Rotation angle	300+/-2°
Step angle	15+/-1°
Operating Temperature	-10 ~ 70